

# Product Brief

## AMS – Archive Management System

Dedicated Micros Archive Management System (AMS) provides a unique method of managing the content produced by large scale fixed and mobile CCTV solutions. As a centrally located database, AMS can automatically index all video and associated meta data produced by any of the connected devices. In addition its archive feature enables an operator to search video stored on the remote device or footage that has already been archived centrally and export video or still images for use as evidence.

### Archive Management

AMS offers the operator the ability to search any video, either locally stored or remotely located on a Video Server and archive to a specified location. A wide range of archive options are available including; NAS, Local Drive devices or FTP Server and multiple storage locations can be used at the same time.

Devices can be regularly accessed to retrieve information as required or, if in a mobile environment, footage can be archived when they reconnect to the network (e.g. at a station or depot). Archived footage can be searched and reviewed from the user interface.

General Status	ID	Path	Server	Loc ID	Started	Elapsed (M)	PID	Running?	Progress	Admin
downloading	135	video/guidip/1254747749	guidip [172.17.249.192]	1	14.02.29 05/10/2009	194	16296	YES	<div style="width: 100%;"></div>	Cancel
downloading	137	video/guidip/1254747892	guidip [172.17.249.192]	1	14.04.42 05/10/2009	61	16620	YES	<div style="width: 100%;"></div>	Cancel
downloading	138	video/DemoRoomHD/1254747920	DemoRoomHD [172.17.249.40]	1	14.05.21 06/10/2009	22	16594	YES	<div style="width: 100%;"></div>	Cancel

Archive Status Screenshot

### Site Management

AMS contains a dynamic site tree for quick and easy management of all connected devices. Users can add, amend, re-order and remove devices from the network through the intuitive GUI whilst an asset search feature can quickly find connected devices by location name, IP address or system name.

Access rights for users can be controlled centrally whilst an audit trail is maintained to track all operator activity.

- Automatic indexing of video and meta data to a central database from all connected devices
- Dynamic site tree for simple management of DVR and Video Server locations
- Asset search for rapid location of devices
- User management – password enabled for security
- Control access rights on a per user basis
- Audit trail for all user accounts to track operator activity
- Automatic and manual archive of video footage to any desired storage location
- Capability to archive from mobile (wireless or 3G), or fixed asset devices
- Search facility of archived video
- Multiple FTP / Video storage location support
- Health monitoring of all connected devices
- User friendly review suite to enable fast review of archived or remote video
- Live view capability to any connected server
- Capture and log all alarms raised by connected device for review

Setup

New Depot New Vehicle New Server

Server Address

Server Port

Server Name (Site ID)

Cameras

Dynamic IP

Part of Vehicle

Telnet Username

Telnet Password

FTP Username

FTP Password

Video FTP Username

Video FTP Password

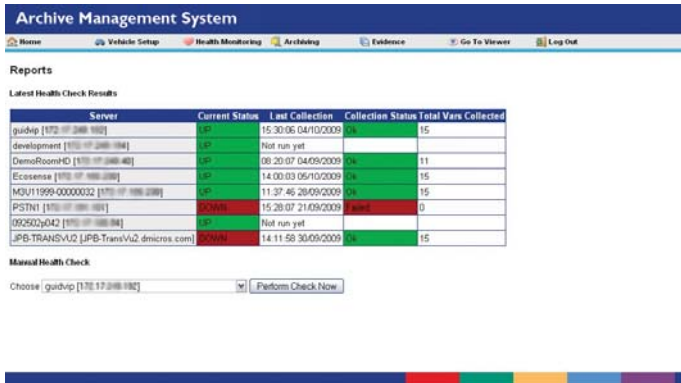
Video Username

Video Password

Site Management Screenshot

## Health Monitoring

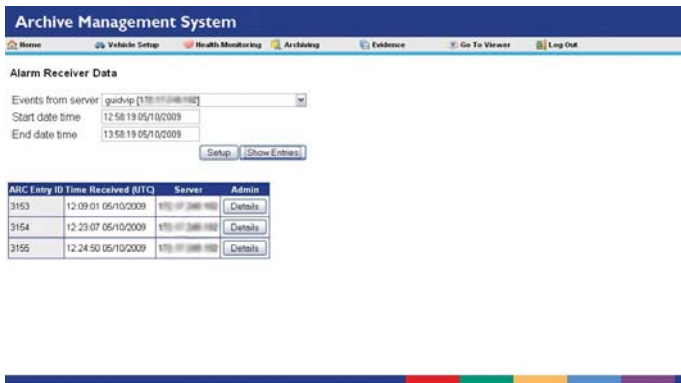
One of the many features of the AMS is the ability to monitor the health status of every connected device. Whilst the AMS can be scheduled or manually instructed to check the health of units - DVRs or Video Servers can also send a health update to the AMS, both techniques providing status levels for drive health, camera fail, network latency and recent reboots / power fails or any other user defined health check. All shown in a single, simple to understand format.



Health Monitoring Screenshot

## Alarm Logging

All alarms generated by connected devices can be captured and logged on the AMS with associated data, including video. In addition rules can be set for AMS to act on receipt of an alarm including; emailing the primary contact, auto archiving associated alarm footage, capture (and email) a still image, or transmit an Emergency Message to an associated server (such as a building management system).



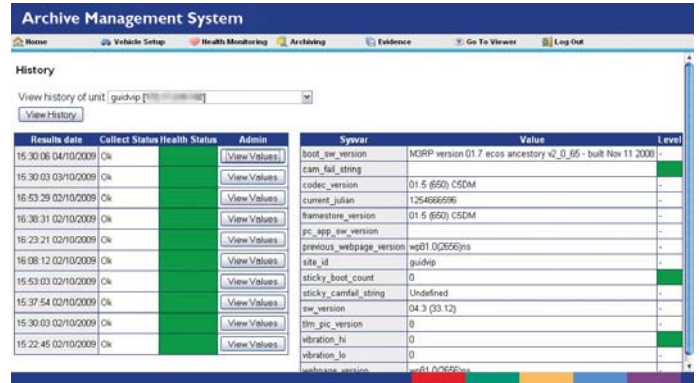
Alarm Logging Screenshot

## Product Compatibility

AMS is compatible with all NetVu Connected products.

## Further Information

For further information please contact your local Dedicated Micros representative.



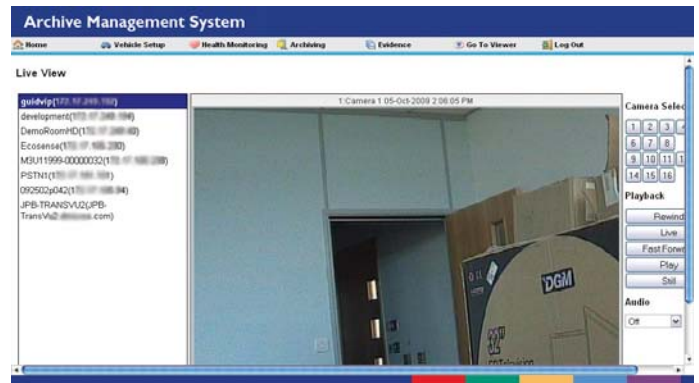
Health Monitoring Screenshot

## Evidence Export

Any archived video footage or meta data can be exported for evidence as a data file, still image or video file via CD/DVD, External Hard Drive or Flash Drive.

## Live Viewer

Access to any camera from any connected device is available via the simple Live Viewer. Operators can also review recorded material from here using the Playback function.



Live Viewer Screenshot